



Increasing Access to Quality Child Care & Resources to Children Experiencing Homelessness

Shakeda Muldrow, MSW, LCSWA Project CATCH Coordinator

Shakeda.Muldrow@uss.salvationarmy.org

Deb Thompson, Project CATCH Statewide Homelessness Technical Assistance Specialist

deb.thompson@uss.salvationarmy.org

AGENDA

- . Initiative Goals
- . Definitions of Homelessness
- . Early Childhood Homeless Statistics (North Carolina)
- . Impact of Homelessness
- . Addressing Barriers
- . Importance of Early Care and Education
- . Accessing ECE Resources
- . Practical Strategies for Sharing ECE Resources



STATEWIDE INITIATIVE DELIVERABLES

E.ducate – 300 parents on ECE resources
100 providers on impact of
homelessness and lack of ECE
on children

C.ollaborate – with ECE programs & homelessness
providers to develop strategies to promote continued
support for access to host resource fairs/forums for 150
parents for children ages 0 to 12

E.xpand – develop plan to promote continued
support in access to quality early care services for
families experiencing homelessness throughout NC



Educate

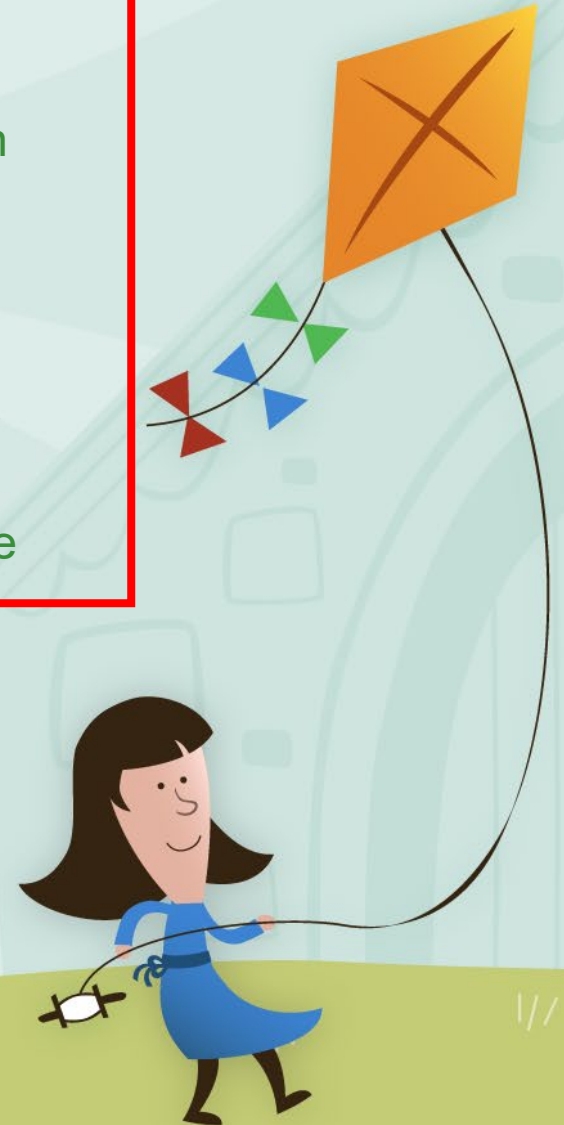
Parents

- On available resources including accessing ECE program for their young children & family
- How to navigate Head Start, Child Care Subsidy, and NC Pre-K
- Connecting them to needed resources i.e. childcare

&

Providers

- On impact of homelessness on children
- Supports for a child/family in homelessness
- Importance of early care
- Technical Assistance



Collaborate

- Partnering with NCCEH Balance of State in Rural Communities
- Partnering with Continuums of Care in Metropolitan Communities
- SERV/McKinney-Vento Liaisons (Homeless Education Liaisons)
 - Partnership for Children
 - The Salvation Army
 - Early Care Providers
 - Housing & Homeless Service Providers
 - Yay Babies
 - Child Care Resource and Referral



Expand

- Support Establishment of Additional COC/BOS Youth Subcommittees
- Support Outreach Events, Provide Technical Assistance and Conduct Training Throughout the State
- Expand Impact by Targeting Migrant Children and Families Within the LatinX Community



HOMELESSNESS DEFINITION

Housing & Urban Development (HUD)

There are four federally defined categories under which individuals and families might qualify as homeless:

1. Literally homeless;
2. Imminent risk of homelessness;
3. Homeless under other Federal statutes; and
4. Fleeing/attempting to flee domestic violence.



McKinney-Vento (MK-V)

Individuals who lack a fixed, regular, and adequate nighttime residence; which includes

1. Children and youths who are sharing the housing of other persons due to loss of housing, economic hardship, or a similar reason; are living in motels, hotels, trailer parks, or camping grounds due to the lack of alternative adequate accommodations; are living in emergency or transitional shelters; or are abandoned in hospitals;*
2. Children and youths who have a primary nighttime residence that is a public or private place not designed for or ordinarily used as a regular sleeping accommodation for human beings
3. Children and youths who are living in cars, parks, public spaces, abandoned buildings, substandard housing, bus or train stations, or similar settings; and
4. Migratory children who qualify as homeless for the purposes of this subtitle because the children are living in circumstances described in clauses 1-3



Early Childhood Homelessness: North Carolina

Early Childhood Homelessness

Children under age 6

Total population

734,550

Estimated number experiencing
homelessness

32,189

or

1 in 23 children

Early Childhood Education
for Children Experiencing Homelessness
under age 6

8% served by Head Start/Early Head Start or
McKinney-Vento funded ECE programs in 2019

1,614 (5%) served by Head Start/Early Head Start
1,025 (3%) served by McKinney-Vento

29,550 , 92% Unserved



Families Experiencing Homelessness

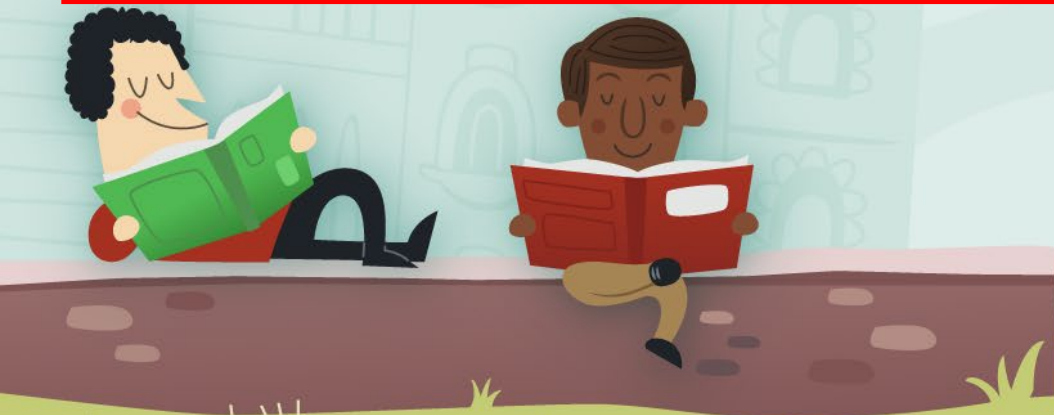
For families, the three most common causes of homelessness are:

- Poverty
- Lack of affordable housing
- Unemployment

Homelessness jeopardizes the health, early childhood development, and educational well-being of infants, toddlers, and preschool-aged children

50%

of children living
in federally-
funded homeless
shelters under the
age of five



Impact of Homelessness on Social Emotional Development

Children Experiencing Homelessness Are:

- Less likely to be breastfed and have well baby visits
- More likely to have chronic health conditions, poor nutrition, and social emotional delays
- More likely to be exposed to violence



Impact of Homelessness on Learning

- Trauma (homelessness) causes toxic stress
- Children's developing language skills are impacted by the stress around them
- One third of all preschoolers had motor-visual abilities that placed them in the 5th percentile of perceptual learning skills
- More than 1/3 all preschoolers had emotional/behavioral problems.
- Seventy percent of children under 5 have at least one major delay, most commonly impulsivity or speech
- Elementary school children are more likely to score poorly on math, reading, spelling and vocabulary tests and more likely to be held back in school



Long Term Impact of Homelessness

Repeated stress has real tangible effects on the development of the brain, which unfolds across a lifetime. It triples the risk for heart disease and lung cancer.



Addressing Barriers to Accessing ECE Resources

1

Educate Parents
on the Benefits of
Early Care and
Education

2

Provide Parents
with a Simple
Process for
Accessing
Resources

3

Educate Parents
on Common
Misconceptions

4

Provide practical
Strategies to
Connect Families
with Resources



Wake Connections Selected Data – Fiscal Year 2020-21

535 applications received (prenatal and/or families with children 0-5 in Wake County)
59.4% English, 43.6% Spanish, 4.7% other

Reported Family Characteristics

- 5.4% of applications reported having temporary/unstable or no housing

Presenting Needs

- 22.8% of applications (122) reported they were seeking services to address behavioral needs of their children.

Income/Benefits

- 82.6% of applications indicated their household receives Medicaid
- 31% of applications reported a family income less than 100% of the Federal Poverty Guidelines.


**Note: 54% of applications declined to provide income information*



Importance of Early Care and Education

- Provides much needed stability and a safe place to learn and grow.
- Gives parents an opportunity to observe positive caregiving practices, which can influence their own parenting
- The first 5 years of a child's life is critical to the rest of their lives
 - Every positive experience helps the brain to form a connection
- Children who attend high quality programs tend to perform better in school, stay in school longer and go to college



PROGRAM	AGE REQ.	INCOME REQ.	COST	ENROLLMENT PERIOD	APPLICATION PROCESS
	4 by Aug. 31 of Current School Year	Yes	Free	Designated	-Go to Smart Start website https://www.wakesmartstart.org/ -Select apply -Review required documentation -Download and print application or complete online -Contact Taty Padilla, Pre-K Outreach Specialist with any questions (919)723-9283 - Submit application by designated deadline
	Birth-5	Yes	Free	Year-Round	Contact Telamon Head Start at one of the following locations: Crosby Head Start Center (Raleigh) 919-856-5232 Parkway Head Start Center (Cary) 919-657-0577 Knightdale Head Start Center (Knightdale) 919-266-1240
Subsidy Assistance for Child Care and After School Programs	DSS (Birth-12)	Yes	Parent Fee	Year-Round	Contact – Jamar Vines Telephone: (919)2127515 Email: jamar.vines@wakegov.com

Finding A Center and Applying for Subsidy Assistance

- DSS contact can provide list of centers enrolled in the Subsidy Program
- Participating centers can also be found on the DCDEE website - <https://ncchildcaresearch.dhhs.state.nc.us/search.asp?lang=English>
 - Select “Search for Child Care”
 - Enter Criteria
 - Select “yes” for Enrolled in Subsidized Care Program
- Applicants must be working or enrolled in school to qualify
- Required Documentation
 - Birth Certificate
 - Pay Stub (If Working)
 - School Schedule (If Applicable)
- Priority Placement Depending on Funding and Availability
- Currently No Waiting List for Child Care Subsidy for Children Birth-5



 <p>Developmental Delays</p>	Birth-5 yrs	N/A	Ability to Pay -May Bill Medicaid or Private Insurance	Year-Round	<ul style="list-style-type: none"> - Go to CDSA website - https://beearly.nc.gov/ - Enter county - Call contact
 <p>Hub for NC Pre-K Wake Connections & Imagination Library</p>	Birth-5 yrs	No	Based on the Program	Year-Round	<ul style="list-style-type: none"> -Go to DCDEE website, Select County and Smart Start County Initiative https://ncchildcare.ncdhhs.gov/County/County-Contacts-Lookup or - https://www.wakesmartstart.org/



WCSS Resource Hubs



Free, high-quality Pre-Kindergarten program for 4-year-olds.

Coordinated intake and referral system that links families to home-based and group services.

Free book program for children ages 0-5 in Wake County.





www.wakeconnections.org
scan or visit to apply for service matching

wakeconnections



WAKE COUNTY
Smart Start

a partner in the
Smart Start network

Meet our Partners: Pregnancy & Postpartum Services

- Complete application at www.wakeconnections.org
- Information is reviewed for eligibility and best fit
- Referrals made based on eligibility, program capacity and family priorities
- Family will be contacted directly by program for intake

PRIMARY PROGRAM FOCUS		PRENATAL SUPPORT	POSTPARTUM DEPRESSION & ANXIETY	PARENTING SKILLS	POSITIVE BIRTH OUTCOMES	POSTPARTUM SUPPORT
CMHRP	HV / Prenatal to 6 wks postpartum. Medicaid eligible only	✓			✓	
HOME-BASED HEAD START	HV / prenatal to 5 Income required	✓		✓		
MOMS SUPPORTING MOMS	HV / Group / warm support line Prenatal to 18 months		✓			✓
NURSE-FAMILY PARTNERSHIP	HV / enrollment by 28 weeks gestation	✓		✓	✓	
PARENTS AS TEACHERS	HV / prenatal & 0-5	✓		✓		✓
TAPS GROUPS	Group / 0-24 months			✓		✓
WIC BREASTFEEDING PEER SUPPORT	HV / warm support line					✓





www.wakeconnections.org
scan or visit to apply for service matching

wakeconnections



Meet our Partners: Child & Family Services

- Complete application at www.wakeconnections.org
- Information is reviewed for eligibility and best fit
- Referrals made based on **eligibility, program capacity** and **family priorities**
- Family will be contacted directly by program for intake

PRIMARY PROGRAM FOCUS		CHILD DEVELOPMENT	SCHOOL READINESS	PARENTING SKILLS	BEHAVIOR MANAGEMENT	RESOURCE LINKAGE
CMARC	HV / 0-5					✓
HIPPY	HV / 3-5		✓			
HOME BASED HEAD START	HV / prenatal to 5 Income required	✓	✓	✓		
HOPE AT HOME	HV / 0-5				✓	
LANGUAGE IS THE KEY	Group / 0-5 Spanish	✓				
PARENTS AS TEACHERS	HV / prenatal to 5 must enroll by age 3	✓	✓	✓	✓	
SAFECHILD GROUPS	Group / 0-5			✓	✓	
SECUREPATH	HV / 0-5				✓	



PROGRAM	AGE REQ	INCOME REQUIREMENTS	COST	• ENROLLMENT PERIOD	APPLICATION PROCESS
McKinney Vento Liaisons (Homeless Education Liaisons)	School Age	N/A	N/A	Open	<ul style="list-style-type: none"> - Go to NC Homeless Education Program website Link - Local Liaisons – North Carolina Homeless Education Program (uncg.edu) - Select Liaison Contacts



Role of McKinney-Vento Liaison

- Removes barriers for children attending school and school activities
- Includes Head Start, Early Head Start, Preschool, and Early Intervention Services
- Connects families with resources to support school stability and protection of the child
 - Immediate Enrollment (even w/o complete documentation)
 - Free Transportation To and From School
 - Free Breakfast and Lunch
 - School Supplies
 - Uniforms (if req'd)



Child Care Resource and Referral (CCR&R)

- Supports the state quality improvement efforts in child care centers across the state
- Facilitates easier access to care for families
- Provides objective information for planning and policy development to public and private sectors
- Provides county specific ECE resources
 - Go to DCDEE website, Select County and CCR&R
<https://ncchildcare.ncdhhs.gov/County/County-Contacts-Lookup> or
 - See Resource Directory for link



Wake County Resource Directory

- Child Care Subsidy Contact (Families Experiencing Homelessness)

- Jamar Vines

- Telephone: (919)2127515

- Email: jamar.vines@wakegov.com

- Smart Start -

- Gayle E. Headen

- Telephone:(919) 851-9550

- Email: gheaden@wakesmartstart.org

- CCR&R -

- Linda Chappel

- Telephone: (919) 403-6950

- Email: lindac@childcareservices.org



Addressing Common Misconceptions

- Information about benefit recipients may be used only to administer the public benefit program and may not be disclosed to federal agencies or officials for other purposes
- Under the McKinney-Vento Homeless Assistance Act, schools must treat information about a homeless child's or youth's living situation as a student education record, subject to all the protections of [Family Educational Rights and Privacy Act \(FERPA\)](#)
- Child Protective Services is only notified if abuse or neglect is suspected
- Qualification for subsidy assistance is based on the child's citizenship



Connecting Families with ECE Resources

Practical Strategies

- Host outreach events in homeless shelters
- Communicate training opportunities on ECE resources to housing and shelter providers
- Post flyers with federal, state and county specific ECE resources
- Include EC representative on COC/BOS Committee
- Create COC/BOS local youth subcommittees
- Promote county specific resources provided by CCR&R and Smart Start/Partnership for Children



Learning Resources -

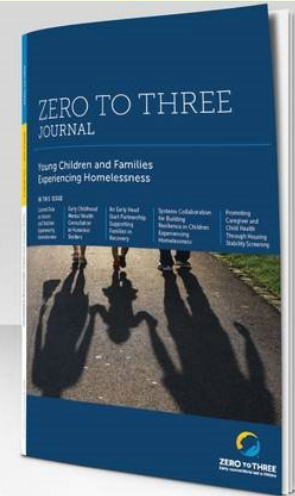
ZERO TO THREE Journal—March 2019:
Young Children And Families Experiencing
Homelessness

<https://www.zerotothree.org/resources/2687-zero-to-three-journal-march-2019-young-children-and-families-experiencing-homelessness>

March Issue
Now Available

ZERO TO THREE
JOURNAL

Download Now



Learning Resources

Module 4: Determining a Family's Homeless Situation



Module 3: Understanding and Applying the Federal Definition of Homeless in Early Childhood Programs



Module 2: Facts About Family Homelessness in Early Childhood

Module 1: Overview of Family Homelessness

Supporting Children and Families Experiencing Homelessness

An Interactive Learning Series for Early Childhood Professionals



NATIONAL CENTER ON
Early Childhood
National Centers
Parent, Family and Community Engagement

Module 8: Connecting with Community Partners

Module 7: Building Relationships with Families

Module 6: Enhancing Program Access and Participation for Children Experiencing Homelessness

Module 5: Identifying and Reaching Out to Families Experiencing Homelessness

Supporting Children and Families Experiencing Homelessness

An Interactive Learning Series for Early Childhood Professionals



NATIONAL CENTER ON
Early Childhood
National Centers
Parent, Family and Community Engagement



Link - <https://www.dcdde.moodle.nc.gov/>



Learning Resources

Sesame Street in Communities: Family Homelessness

<https://sesamestreetincommunities.org/topics/family-homelessness/>

SchoolHouse Connection Sesame Street Implementation Guides:

<https://www.schoolhouseconnection.org/guide-to-using-sesame-street-in-communities-resources-on-family-homelessness/>

Traumatic Experiences

<https://sesamestreetincommunities.org/topics/traumatic-experiences/>



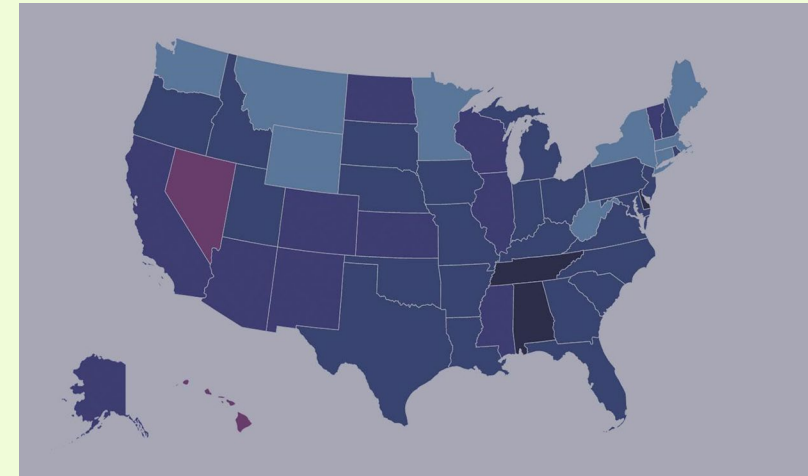
Data Resources

Out of the Shadows: A State-by-State Ranking of Accountability for Homeless Students

<http://www.icphusa.org/national/shadows-state-state-ranking-accountability-homeless-students/>

The United States of Homelessness – Institute for Children, Poverty & Homelessness

https://www.icphusa.org/interactive_data/the-united-states-of-homelessness/



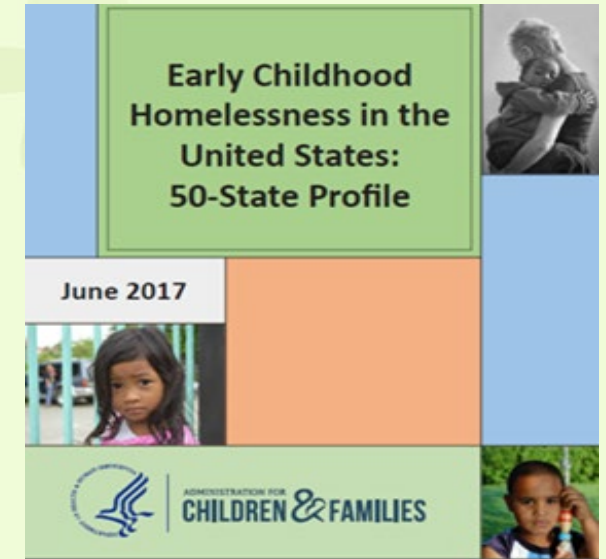
Data Resources

Early Childhood Homelessness – State Profiles 2018

<https://naehcy.org/wp-content/uploads/2019/01/early-childhood-homelessness-state-profiles.pdf>

Early Childhood Homelessness – State Profiles 2019

<https://www2.ed.gov/rschstat/eval/disadv/homeless/early-childhood-homelessness-state-profiles-2019.pdf>



US DHHS ACF Resources

- ACF Early Childhood Development Expanding Early Care and Education for Children Experiencing Homelessness

<https://www.acf.hhs.gov/ecd/interagency-projects/ece-services-for-homeless-children>

- Well-being of Young Children after Experiencing Homelessness

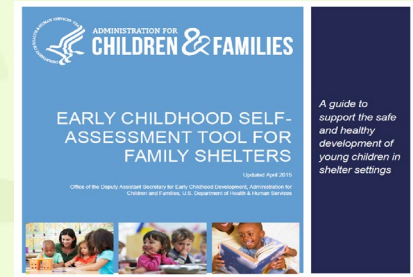
<https://www.acf.hhs.gov/opre/research/project/homeless-families-research-briefs>



DHHS DCDEE ASSESSMENTS

Early Childhood Self Assessment Tool for Family Supportive Housing

https://www.acf.hhs.gov/sites/default/files/ece/ece_family_supportive_housing_self_assessment_tool.pdf



Early Childhood Self-Assessment Tool for Family Shelters

<https://www.acf.hhs.gov/ece/interagency-projects/ece-services-homeless-children/self-assessment-tool-family-shelters>



Self Assessment Tool for Early Childhood Programs Serving Families Experiencing Homelessness

https://www.earlychildhoodwebinars.com/wp-content/uploads/2016/09/Self_Assessment_Tool_for_Early_Childhood_Programs.pdf



References

Child Care Services Association. (2020). *Homelessness Resources*.
<https://www.childcareservices.org/page/2/?s=homelessness+resources>

National Center for Homeless Education. (n.d.). *Identifying Children and Youth Experiencing Homelessness – National Center for Homeless Education*. NCHE Resources. Retrieved June 25, 2021, from <https://nche.ed.gov/identifying/>

NC Child Development and Early Education. (n.d.). *NC Child Development and Early Education*. NC Division of Child Development and Early Education Moodle Trainings. Retrieved June 25, 2021, from <https://www.dcdee.moodle.nc.gov/>

United States Interagency Council on Homelessness. (2018, February). *Key Federal Terms and Definitions of Homelessness Among Youth*.
https://www.usich.gov/resources/uploads/asset_library/Federal-Definitions-of-Youth-Homelessness.pdf

US Department of Education (ED). (2021, May). *Policy and Program Studies Service -- P-12*. Early Childhood Homelessness State Profiles: 2018–19.
<https://www2.ed.gov/about/offices/list/oepdp/ppss/reports.html>



Thank you!

Questions?



QR Code for
Training Feedback



<https://forms.office.com/r/Y0E3D8LqQr>