



Wake County CoC Membership Meeting

Monday, May 19

2:00 – 3:30 pm

Raleigh Housing Authority

Please Sign-in

AGENDA

- CoC Lead Agency Updates & Governance Overview
- Committee Features and Updates
- 2025 Point-In-Time Count Preliminary Results
- 2024 System Performance Measures (SPMs)
- Call for Member Updates

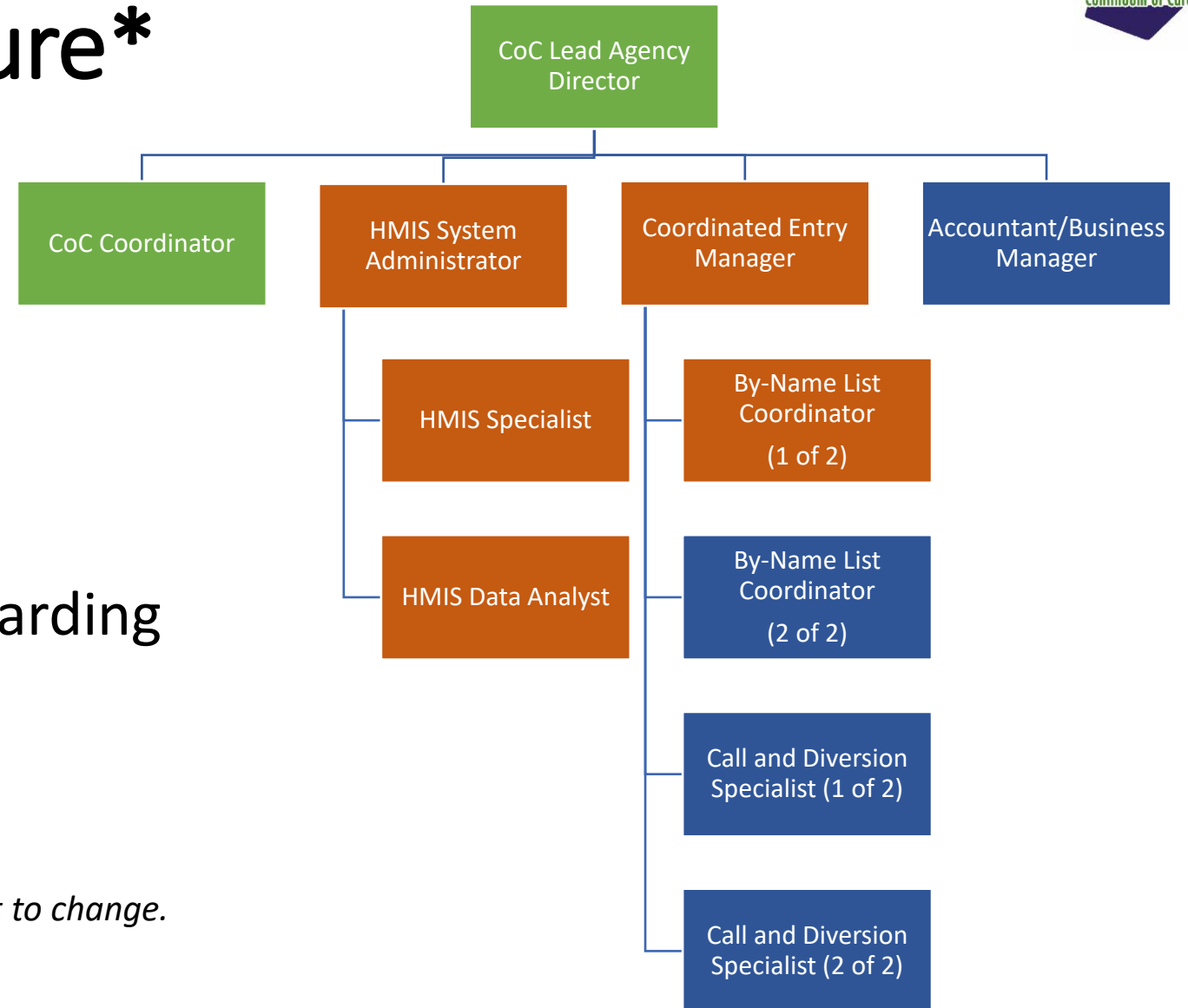


CoC Lead Agency Updates and Governance Overview

Wake County FY26 Recommended Budget

- Proposes adding 9 positions to the CoC Lead Agency Department
- The [full recommended budget](#) and [presentation](#) are available at wake.gov
- Opportunities for Public Comments:
 - Public Hearings:
 - Monday, 05/19 at 2pm – Wake County Justice Center Board Chamber
 - Tuesday, 05/20 at 7pm – Wake County Commons Building
 - Online form: <https://www.surveymonkey.com/r/YN8TR7W>


CoC Staffing Structure*



- Onboard

 CoC Lead Agency Director
 CoC Coordinator

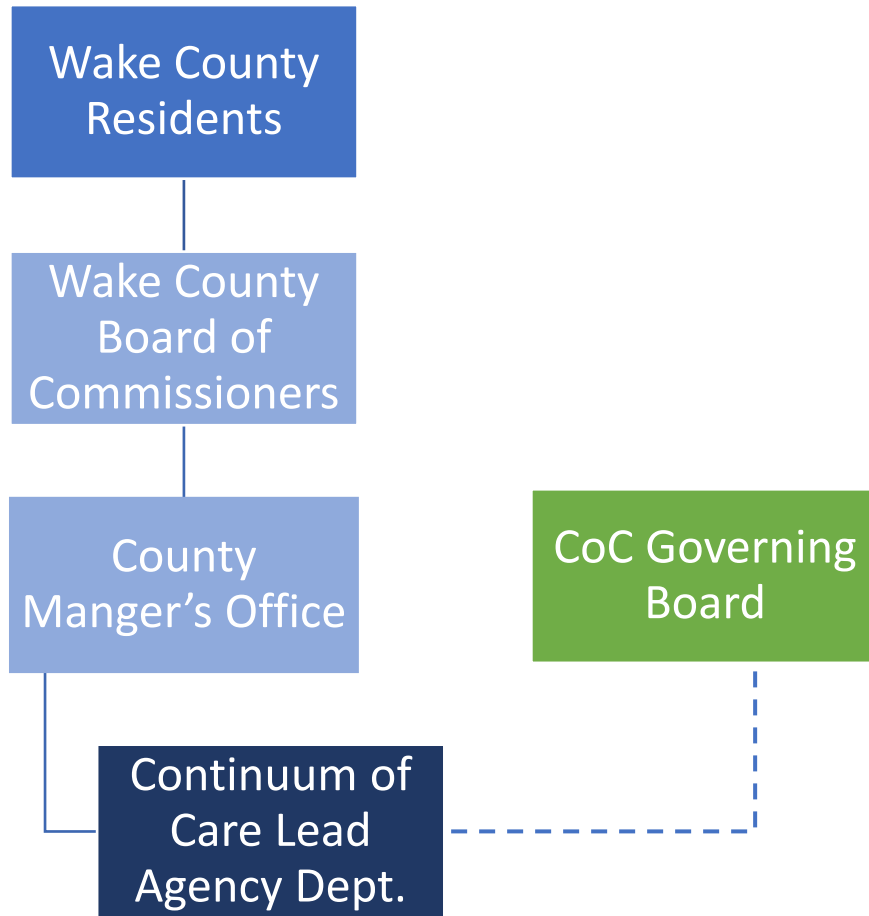
- Recruiting, Hiring and Onboarding

 June – August

 September – November

**Dependent on final approved FY26 budget. Subject to change.*

Governance of CoC Lead Agency



- CoC Lead Agency reports to both:
 - Wake County Board of Commissioners
 - Wake CoC Governing Board
- Wake County as CoC Lead Agency means have access to and can leverage County resources, including:
 - Budget Management and Support
 - Communications
 - Department Collaboration
- CoC will maintain distinct branding and decision-making processes

Funding Updates

- **FY2024 HUD CoC NOFO**

- 6 of 12 grant awards and/or award letters received as of 05/16
- Overall CoC application score increased by 25 points from FY2023 NOFO

- **State Emergency Solutions Grant (ESG)**

- NC DHHS ESG Office expect to release Public Notice by 06/10 for a due date of 08/25.
- Stay tuned for updates from Wake CoC for:
 - Letter of Interest
 - Training/Pre-Application Meetings
 - Project Application Details

Committee Features & Updates

Data Advisory Committee (DAC)

- **Purpose:**

- Identifies the needs for HMIS training and reviews HMIS reports to funders.
- Reports periodically on data completeness and data quality measures
- Regularly reviews data policies, procedures and provides recommendations on how system-wide data performance can be improved.
- Annual Gaps Analysis and complete system and project-level performance evaluation and data monitoring.

- **Projects Underway:**

- Coordinated entry workflow updates and Continuous Quality Improvement (CQI).

- **What's Next?**

- Review PIT/HIC and SPM submissions for recommendations.
- HMIS software RFP.
- Training on Client Rights and Data Protection.

Coordinated Entry System (CES) Committee

- **Purpose:** Macro-level oversight of the Coordinated Entry System.
 - Troubleshoots issues and makes recommendations to the CoC Governing Board and the full CoC membership on any macro-level changes for system improvement, such as significant changes to policy and prioritization of people experiencing homelessness.
- **Projects Underway:**
 - CE Access Site Flyer Update
- **What's Next?:**
 - Policies and Procedures Interim Updates: Active/Inactive and Auto-Exit

Nominations Committee

- **Purpose:**

- Receives, reviews, and recommends nominees for the Wake CoC Governing Board and its Committees.
- Develops and implements plans and activities designed to recruit as many diverse stakeholders within the community as possible.
- Collaborates with the Wake CoC Governing Board to develop standards and qualifications

- **Projects Underway:**

- Board and Committee role descriptions.

- **What's Next?**

- Review Committee Seats and Membership.

Racial Equity Committee (REC)

- **Purpose:** Evaluates policies, procedures, and data to ensure compliance with the North Carolina State Fair Housing Act.
 - Ensures that equal access to safe and affordable services and housing is the norm for all County residents.
 - Monitors the which populations are overrepresented in the homelessness system; recommends policy changes based on data and best practices; creates and supports system partnerships; and develops plans and processes to assess Wake CoC's policies.
- **Projects Underway:** Updates to 2025 Work Plan.

! Call for New Members!

- Looking for policy driven individuals that are attentive to details to join the FHC and 1 other committee of your interest to guide policies and protocols.

Funding Review Committee (FRC)

- **Purpose:** Reviews and ranks project applications for funding through the CoC NOFO and other approved funding sources. This group develops fair and transparent processes for determining what projects and organizations receive funding.
- **Projects Underway:**
 - Emergency Solutions Grant (ESG) Notice and Scorecard
 - FY2024 HUD CoC NOFO Debriefing
- ! **Call for New Members!** Ideally 1 – 2 more members who:
 - Can dedicate time and quick turnaround review of project applications and
 - Do not receive ESG or CoC funding/have other conflict of interest.

Homeless Emergency Response Committee (HERC)

- **Purpose:** Assists and oversees the management of “emergency” events as they arise. Activation would be determined by the set guidelines and protocols that are set forth by this committee and approved by the NC 507 CoC. The benefit of having such a system in place would be to have a unified command structure and communications strategy for large scale events or events where multiple people/agencies are impacted.
- **Projects Underway and Next Steps:**
 - Summer/Heat Planning Updates
 - White Flag Response Plan

Call for New Members!

- Representatives from each shelter provider or organization
- Access Sites who coordinate front door and/or day services
- Front line staff and persons with lived expertise to

2025 Point-In-Time (PIT) Count Preliminary Results

What is the Point-in-Time (PIT) Count?

- The U.S. Dept. of Housing and Urban Development (HUD) requires Continuum of Care (CoCs) to conduct an annual count of people experiencing homelessness on a single night within the last 10 days of January.
- The Point-in-Time (PIT) Count includes people experiencing homelessness who are **unsheltered** and **sheltered** in emergency shelter, transitional housing, and Safe Havens on a single night.
- Data reported through the PIT is used as an estimate of the scope and scale of homelessness in our community and informs planning, including response to funding opportunities.

Context for the 2025 Count

- **Wake CoC PIT Count:** January 22, 2025.
 - A White Flag alert was active the night of PIT and subsequent days.
- Results are still considered **preliminary**. HUD has not yet opened the portal to submit and finalize the PIT/HIC results.
- The single-night PIT count does not reflect the impact of significant housing efforts made in the calendar year to date:
 - Opening of King's Ridge permanent housing
 - Bringing Neighbors Home Unsheltered Response Pilot Program
 - Matches to Rapid Rehousing and Permanent Supportive Housing through Coordinated Entry

Definitions

- **Homeless:** Defined by HUD as Category 1: Literally Homeless (§ 578.3), person staying in:
 - place not meant for human habitation [unsheltered]; or
 - publicly or privately operated shelter; or
 - returning to unsheltered or sheltered location from an institutional stay of in 90 days or less.
- **Chronic Homelessness:** Presence of a disabling condition **and** long or repeated episodes of homelessness consisting of at least 12 consecutive months or across 4 separate occasions in the last 3 years, for a total of at least 12 months.
- **Unsheltered:** Primary nighttime residence that is a public or private place not designed for or ordinarily used for human habitation, including street, car, park, abandoned building, transit station, etc.
- **Sheltered:** Temporary housing dedicated to people experiencing homelessness, including congregate, emergency, low-barrier or drop-in shelter and transitional housing.
- **Unaccompanied:** Not otherwise living with or experiencing homelessness with other household members, parent or legal guardian.
- **Youth/Young Adult:** Aged 18 – 24. Also known as Transition Aged Youth (TAY).

Unsheltered Count Methodology

- The Wake CoC employed the *Known Locations Strategy* for the Unsheltered portion of the PIT Count.
 - **Night of the Count**
 - Over 145 volunteers from 36 organizations formed teams to survey individuals in known locations reported and checked by street outreach teams, agencies, PD/FD, and community members.
 - **Service-based (post-night) Count** via day service/non-shelter centers
 - Garner United Methodist Church
 - Oak City Cares

Volunteer Coordination

Total number of volunteer sign-ups: 145

Total number of organizations who sent volunteers: 36

Total number of individual community member volunteers: 34

- **January 23, 2025, from 6-8 AM**
 - *Rescheduled due to winter weather*
- **January 23, 2025, from 8-10 PM**
 - 5 Teams, 37 volunteers
- **January 24, 2025, from 6-8 AM**
 - 7 teams, 48 volunteers, ACORNs assistance
- **January 25, 2025, from 8AM-6PM**
 - 1 team, 8 volunteers at Garner United Methodist Church (8-10AM)
 - 3-hour shifts at Oak City Cares, 52 volunteers overall (9AM-6PM)- *Half of the results came in from surveys conducted at OCC*

Comfort Item Donations

- Approximately 530 donation bags were passed out over the course of PIT. Community volunteers donated and prepared the bags.
 - **Drawstring bags included:** winter hat, gloves, scarf, pair of socks, two sets of hand warmers, \$5 McDonalds gift card (*500 gift cards were donated by Haven House Services*), and a Coordinated Entry Access Site Flyer
- **90 kits** were packed and donated by Kimley-Horn through a volunteer event at Oak City Cares
- **60 bags** were collected, packed and donated by St. Francis of Assisi's middle school youth group
 - *Leftover bags for youth were donated to Haven House Services' Street Outreach Program*
- **10 Narcan bags** were donated by a HUD field office employee and re-directed to WakeMed H.E.A.R.T.
- **50 female hygiene kits** were donated by No Woman, No Girl Initiative and re-directed to The Women's Center of Wake County, Haven House Services and Raleigh Boots on the Ground



Community volunteers at The Green Chair Project on January 14, 2025. Family-friendly event posted using Activate Good; Hosted 30 volunteers (ages 7+).



Shelter Count Methodology

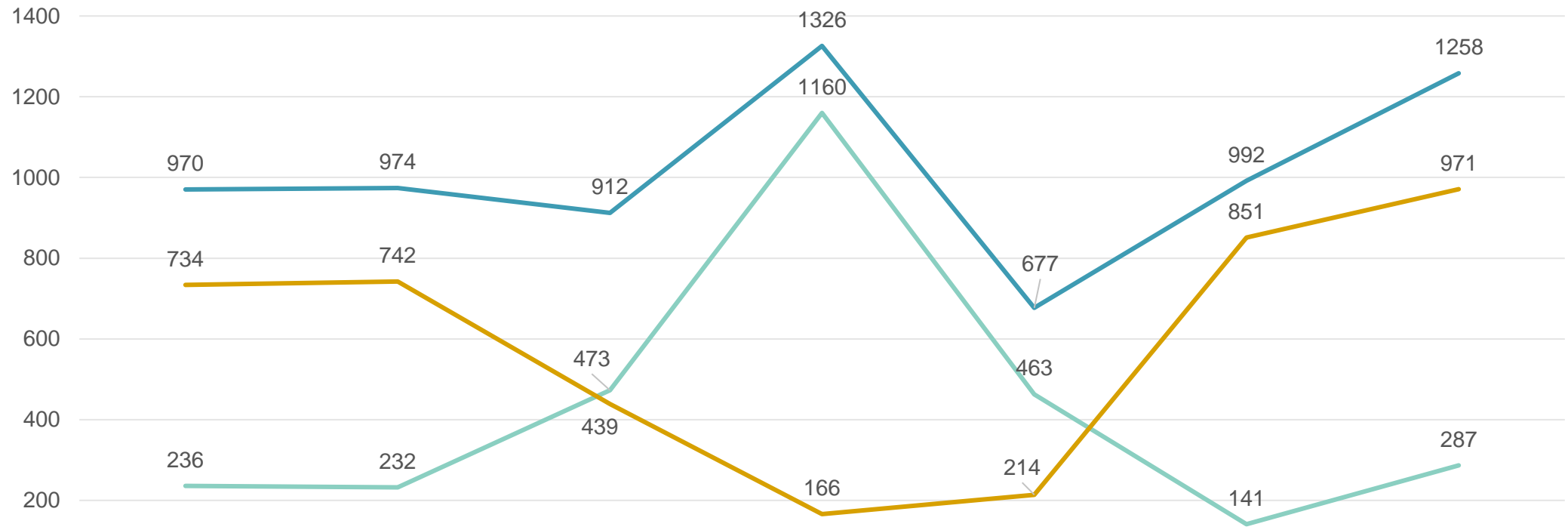
- Wake CoC confirmed households residing in sheltered locations on the night of PIT from:
 - HMIS program roster reports for all shelter, transitional housing and Safe Haven programs for the night of PIT and
 - Non-HMIS participating programs, such as Domestic Violence or victim-services providers who use an HMIS comparable database.
- Requires review for duplicate client records between unsheltered and sheltered counts.

Overall Homeless

Unsheltered		Sheltered (ES, TH, SH)		Total
287	+	971	=	1,258 people

Total Persons	2025	2024	% Change from 2024	% Change from 2019
Unsheltered	287	141	103.5%	21.6%
Emergency Shelter (ES)	886	763	16.1%	59.9%
Transitional Housing (TH)	77	88	- 12.5%	- 57.2%
Safe Haven	8	0	-	-
Total	1,258	992	26.8%	29.7%

PIT Count Results 2019 - 2025



	2019	2020	2021	2022	2023	2024	2025
Unsheltered	236	232	473	1160	463	141	287
Sheltered Total	734	742	439	166	214	851	971
Total	970	974	912	1326	677	992	1258

Unsheltered Sheltered Total Total

Overall Homeless by Household Type

	<i>Family Households</i>	Persons in Families	Unaccompanied Individuals	Total
Unsheltered	2	7	280	287
Emergency Shelter	59	206	680	886
Transitional Housing	18	53	24	77
Safe Haven	0	0	8	8
Total Persons	79 families	266	992	1,258 persons

Unsheltered

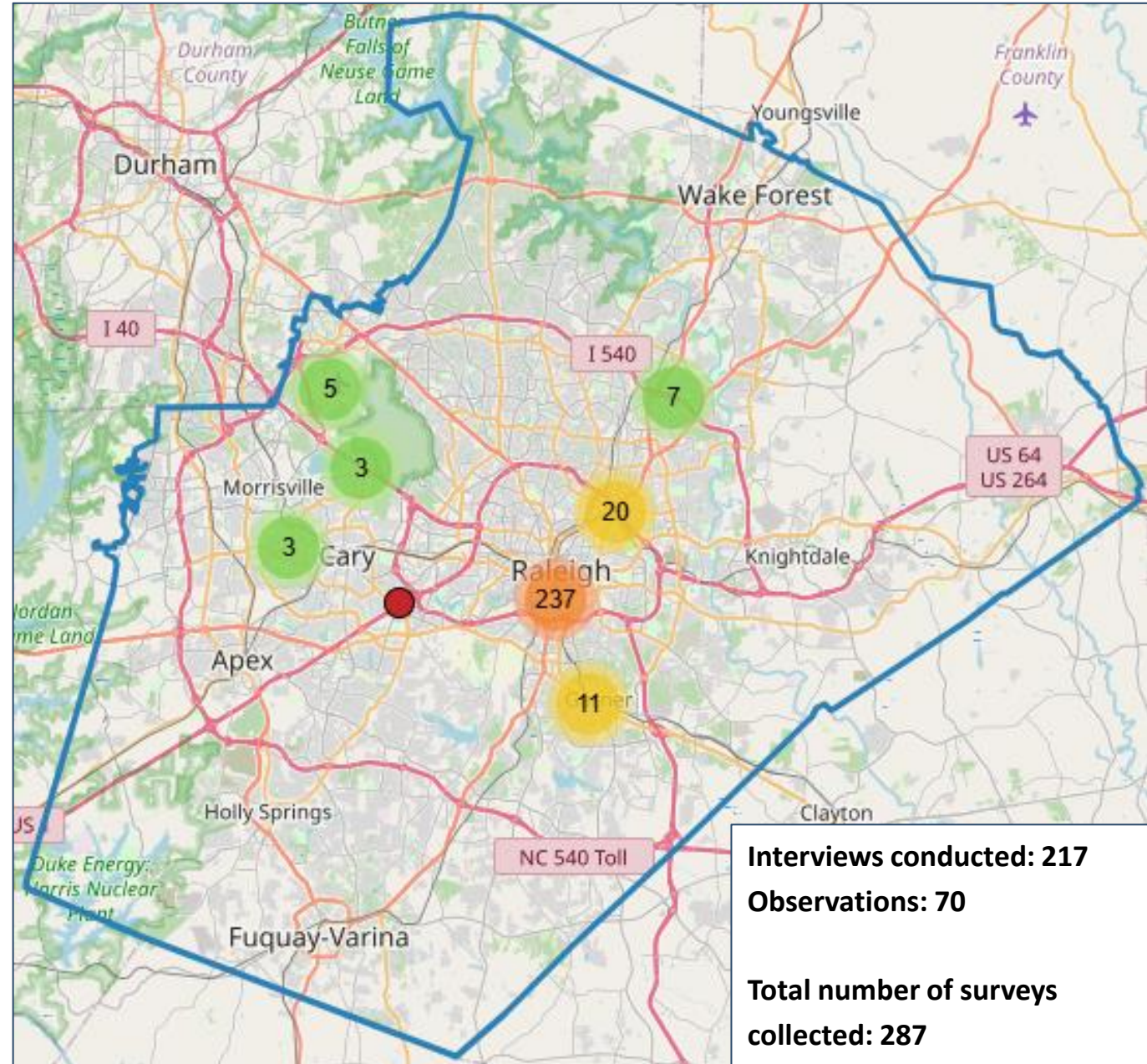
Number of Unsheltered Locations Reported (Prior to the PIT Count):

- Cary (11)
- Garner (6)
- Morrisville (1)
- Raleigh (62)
- Wake Forest (1)
- Zebulon (1)

Number of Surveys Collected by Municipality:

- Cary (7)
- Garner (11)
- Morrisville (5)
- Raleigh (264) – includes surveys completed at service centers.

White-Flag was in effect due to severe winter weather on the night of the PIT Count, affecting unsheltered numbers.

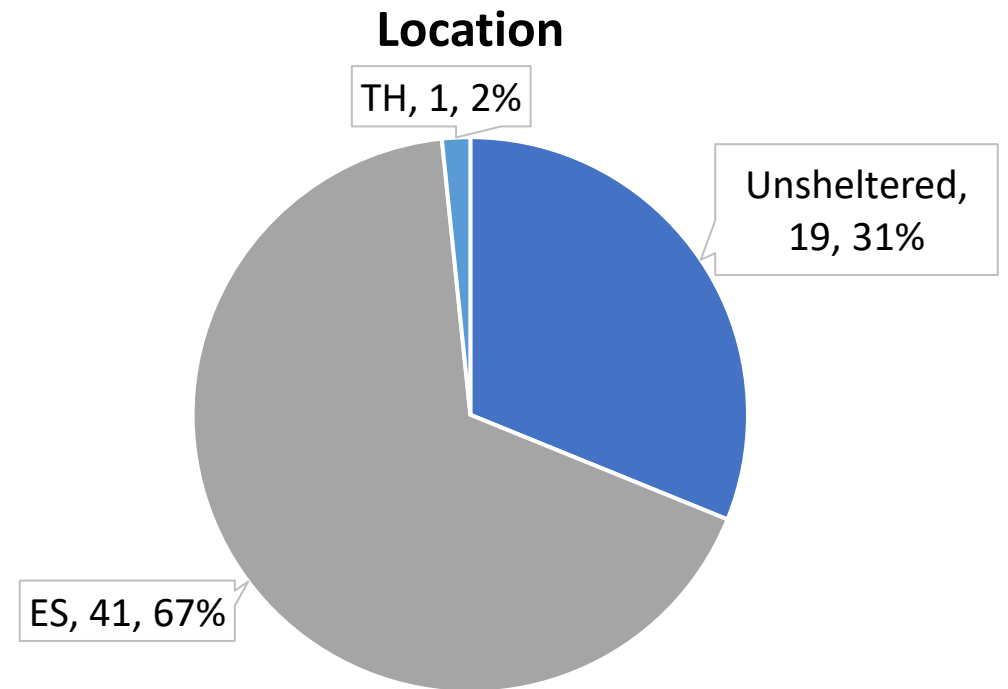
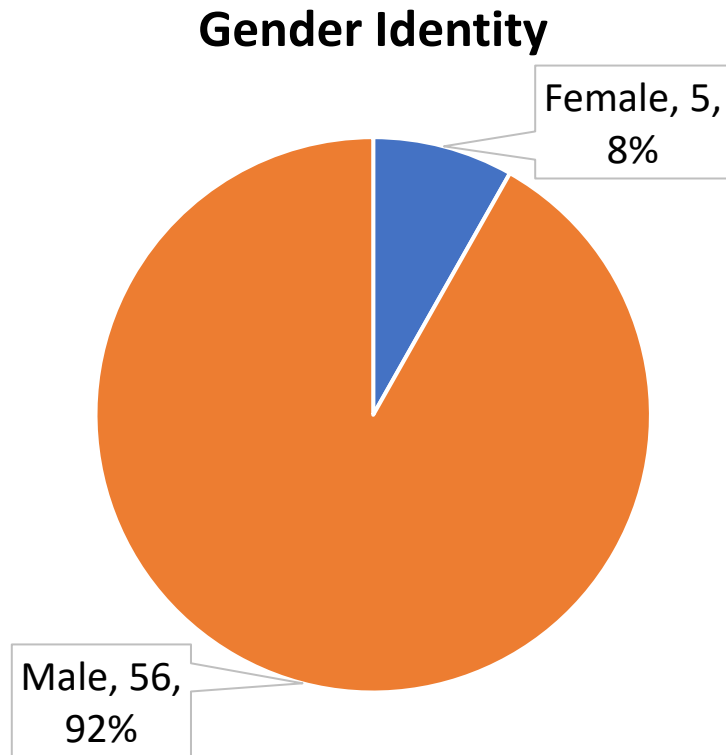


Chronically Homeless

- The HUD definition of Chronic Homelessness includes:
 - Presence of a disabling condition *and*
 - 12 consecutive months homeless or 4 episodes in the last 3 years, totaling at least 12 months.
- In the 2025 PIT Count, **320 people or 25%, were chronically homeless.**

Veterans

- There were **61 Veterans** counted during the 2025 PIT.
- The majority were male, single adults and residing in emergency shelter.



Race & Ethnicity

- In 2024, HUD changed data standards for collecting race and ethnicity as a single measure.
- 75 percent of all persons (including children) identified with a race and ethnicity other than White alone, or White and Hispanic/Latina/e/o compared to Wake County at large at 42 percent.

	# of Persons	% of Total
Alaska Native	5	0.4%
Asian or Asian American	10	0.8%
Black, African American, or African	792	63.0%
Black, African American, or African & Hispanic/Latina/e/o	18	1.4%
Hispanic/Latina/e/o	27	2.1%
Middle Eastern or North African	1	0.1%
Native Hawaiian or Pacific Islander	3	0.2%
White	298	23.7%
White & Hispanic/Latina/e/o	10	0.8%
Multi-Racial & Hispanic/Latina/e/o	4	0.3%
Multi-Racial (NOT Hispanic/Latina/e/o)	51	4.1%
Data Not Collected	39	3.1%

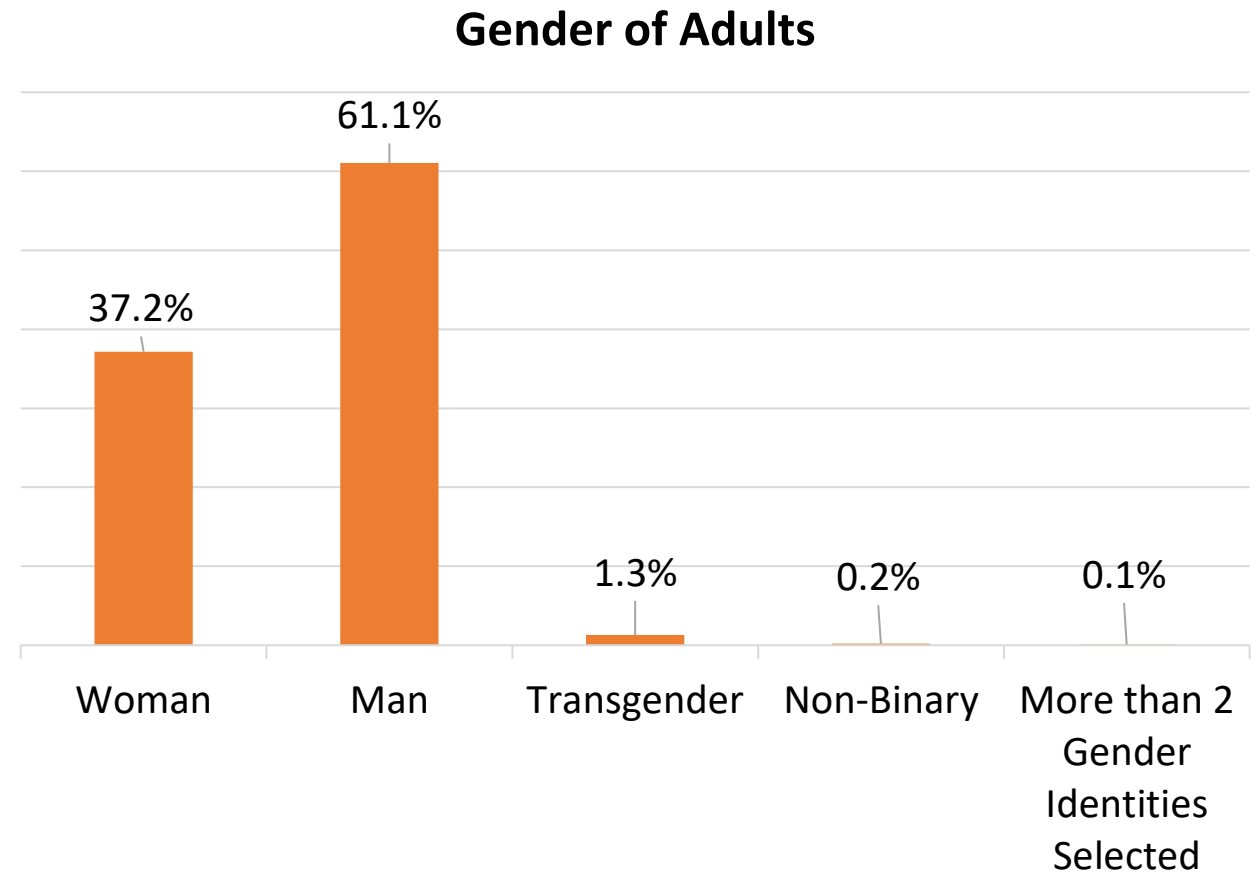
Age

- The average age of all adults was 46.
- The median age for unaccompanied individuals was 49 (50 for men and 46 for women) and 36 for heads of family households.
- Transition Aged Youth (TAY) make up 5% of the total population.
- There was one (1) Unaccompanied Minor counted in shelter.

Age Range	Number of Persons	% of Total (1,258)
0-17	156	12.4%
18-24 (TAYs)	66	5.2%
25-34	176	14.0%
35-44	205	16.3%
45-54	232	18.4%
55-64	235	18.7%
65-74	87	6.9%
75+	8	0.6%
Unknown	93	7.4%

Gender Identity

- 1,009 adults counted
 - 61% men
 - 37% women
 - 1.5% transgender, non-binary, or more than two gender identities
- 73% of men were sheltered, 23% were unsheltered.
- 77% of women were sheltered, 13% were unsheltered.
 - More women reside in transitional and Safe Haven programs.
- 3 Transgender and 1 Non-Binary person were unsheltered during PIT.



Key Takeaways & Next Steps

- **Key Takeaways from the 2025 PIT Count**

- Provides a new benchmark with a more reliable methodology replicable for future counts
- Highlights the need for coordinated unsheltered homelessness response
- Demonstrates demand for year-round, drop-in shelter

- **Next Steps**

- Finalize the PIT and Housing Inventory Count (HIC) results. Due to HUD by 06/13.
 - HIC: a point-in-time inventory of provider programs within a CoC with beds and units dedicated to serve people experiencing homelessness.
 - HUD reports HIC and PIT results each year to Congress in the Annual Homeless Assessment Report (AHAR).
- Comprehensive report, to include additional detail on disabling conditions, life experiences.
- Plan for 2026 Count via CoC Street Outreach Workgroup.

2024 System Performance Measures (SPMs)

What are the System Performance Measures (SPMs)?

- HUD defined measures to evaluate the effectiveness of CoCs in addressing homelessness.
 - Length of Time Homeless
 - Returns to Homelessness
 - Number of Homeless Persons
 - Employment and Income Growth
 - Number of Persons Becoming Homeless for the First Time
 - Homeless Prevention and Housing Placement
- SPMs cover the Federal Fiscal Year. For FY2024, October 1, 2023 to September, 30, 2024.
- Wake CoC submitted FY2024 SPMs to HUD on April 10th.

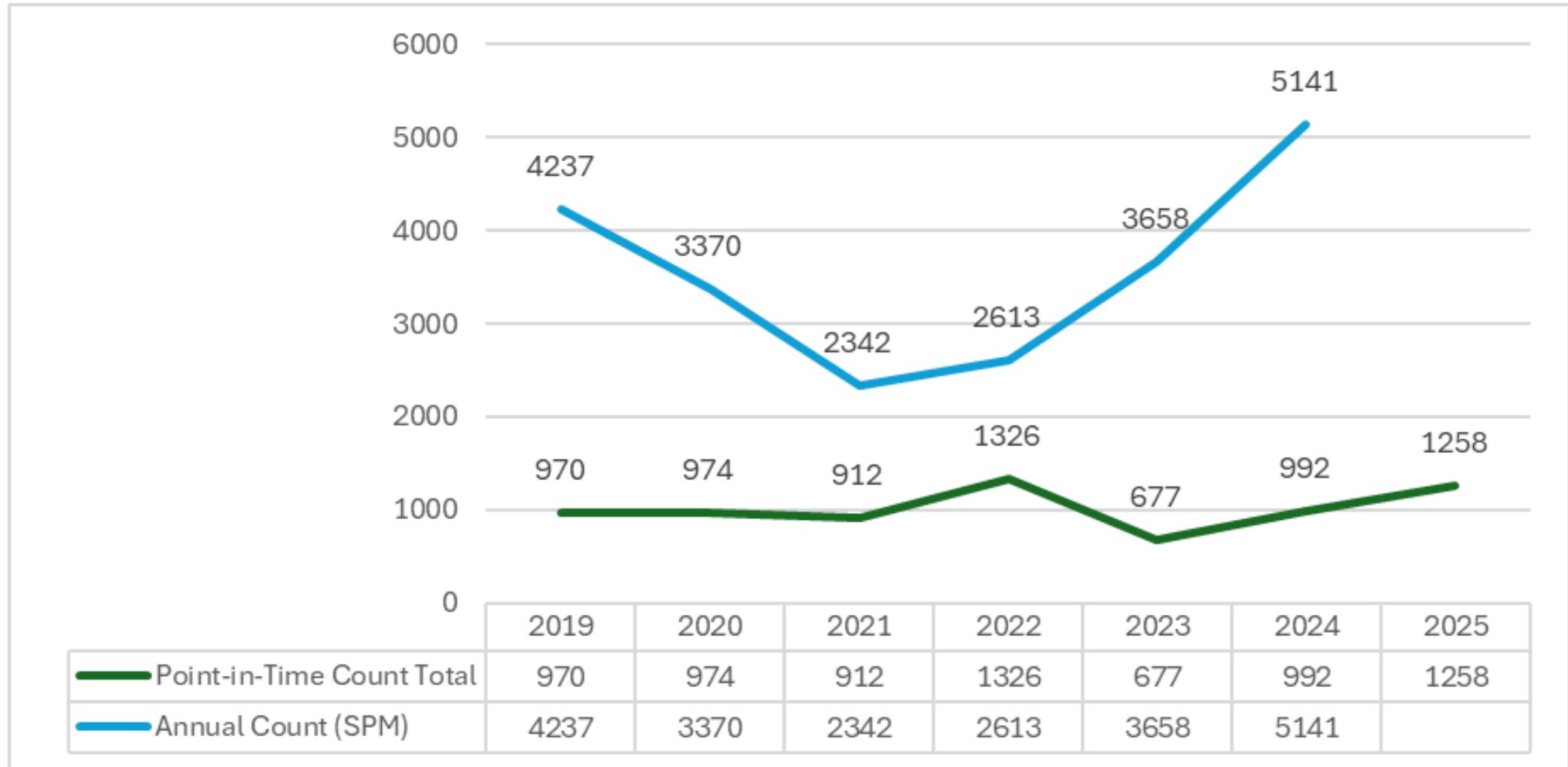
FY2024 Wake CoC SPM Submission

Reflects Performance
IMPROVEMENT

Reflects Performance **DECREASE**

Measure	Metric	Revised FY 2023	FY 2024	Change from Prior Year
Measure 1: Length of Time Persons Experience Homelessness	Average Days people spend in Shelter (ES-EE, ES-NbN, SH, TH)	58	56	-2
	Average Days people spend Experiencing Homelessness (ES-EE, ES-NbN, SH, TH and PH prior to "housing move-in")	485	524	39
Measure 2: Returns to Homelessness	Total percent of persons returning within 2 years	19.3%	18.9%	-0.4%
Measure 3: Number of Homeless Persons	Point-in-Time Count Total persons (sheltered and unsheltered)	992	992	0
	Annual Count Total persons (unduplicated count; ES, SH, and TH)	3,658	5,141	1,483
Measure 4: Income Growth for Persons in CoC Program-funded Projects	Adults with increased Total Income	47%	24%	-23%
Measure 5: First time Homelessness	Persons experiencing homelessness for the first time in the previous 24 months (accessing ES-EE, ES-NbN, SH, TH, or PH)	3,089	3,873	784
Measure 7: Successful Placement in or Retention of Permanent Housing	People with successful exits from Street Outreach	53%	69%	16%
	People with exits to permanent destinations from ES-EE, ES-NbN, SH, TH, RRH and PH (not moved into housing)	19%	15%	-4%
	People with successful Exits to or Retention of Permanent Housing (PSH and OPH, not RRH)	95%	97%	2%

PIT and SPM Comparison 2019 - 2025



Key Takeaways & Next Steps

Key Takeaways

- Uptick in first time homeless → prevention and front door strategies
- Decrease in income growth and exits to permanent destinations → document good work and strategize to expedite housing

Next Steps

- Review PIT, HIC and SPMs in more detail via Data Advisory Committee
- Evaluate opportunities for training and data quality improvement

Member and Agency Updates

Adjourn



Next Meeting:

- **Date:** Monday, June 23rd at 2:00pm
- **Location:** Raleigh Housing Authority – Community Room
 - 971 Harp Street, Raleigh, NC 27601
 - Across from 900 Haynes Street entrance
- **Tentative Agenda:**
 - Coordinated Entry System Design and Tool

If you have not done so already, please sign-in!

CoC Coordination or for more info: Info@wakenc507.org